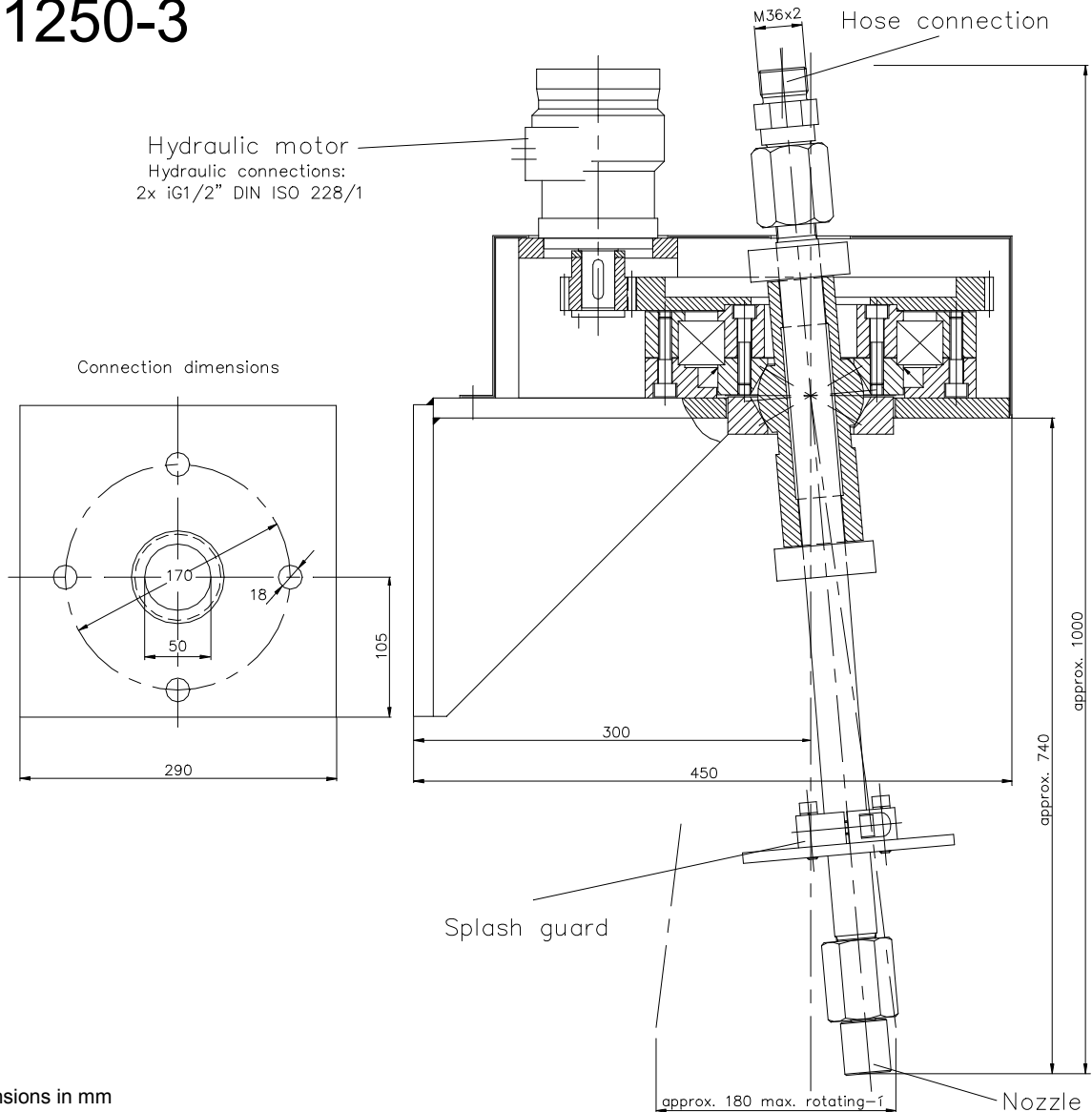


Orbiter OH 1250-3



All dimensions in mm

Description:

The Orbiter is a rotating high-performance jetting tool for surface treatment and concrete deep removal. It is designed to be attached to traversing units, building machines and robots. It consists of the carrier frame, the hydraulic drive, the rotating mechanism, the nozzle receiver and the nozzle lance.

Special Advantages:

- sturdy construction suitable for building sites
- all-purpose construction
- high efficiency
- adjustable in height and rotating surface for various working intensities

Technical Data:

Part No.:		001.0864
Operating Pressure:	max.	1250 bar
Flow rate:	max.	400 l/min
Operating speed:	max.	150 1/min
Speed hydraulic motor:	max.	800 1/min
Hydraulic oil pressure:	max.	20 bar
Hydraulic oil flow:	max.	40 l/min
Hose connection:	M36x2	- 24° DK
Weight:	approx.	86 kg
Applicable nozzles:	forms	1 and 8